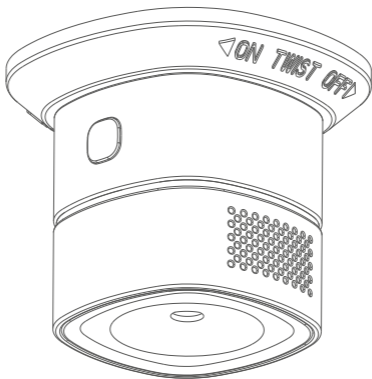




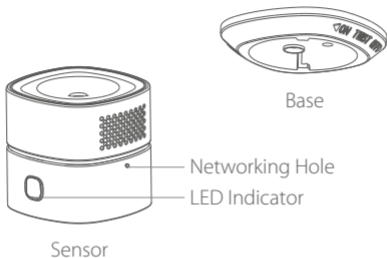
User Guide



Smart Smoke Sensor

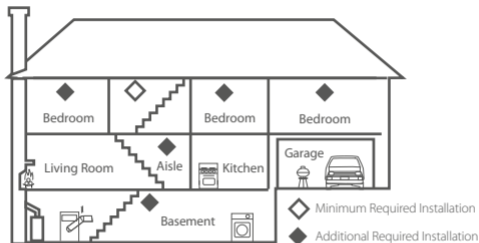
Thanks for using Aztech Kyla product
If you need support or help, please visit www.kyla.aztech.com

Product Description



The Smart Smoke Sensor alarms when there is excess smoke detected indoors. It adopts high-performance electrochemical sensor, supports sound and flash alarm, has ultra-low power consumption for longer battery lifespan, and many other features.

Installation Tips



To increase safety factors in single-layer house, at least a Smart Smoke Sensor in each bedroom and at 6m from chimney and gas fixture is suggested.

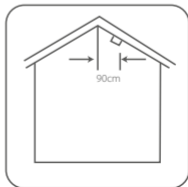
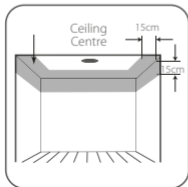
To increase safety factors in multi-layer house, at least a Smart Smoke Sensor in each bedroom, in basement, and at 6m from chimney and gas fixture, is suggested.

Ceiling Mounting

The preferred location to install smoke alarm is in the centre of the ceiling because smoke, heat, and combustion products rise to the ceiling and will lateral spread. Keep at least 30cm distance from lights or decorations, and at least 15cm away from walls and corner. If hall is more than 12 meters wide, please install at 2 sides of the hall.

Sloping Ceiling Mounting

If ceiling is sloping, please install the smoke alarm at horizontal distance 90cm away from the ceiling top.



Operation Guide

Step 1:

Download Aztech Kyla App from Google Play/App Store

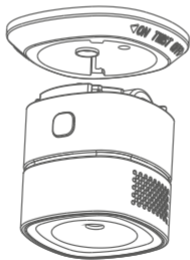


Step 2:

Login to Aztech Kyla App, then add "Smart Smoke Sensor" to device list to enable the device.

Step 3:

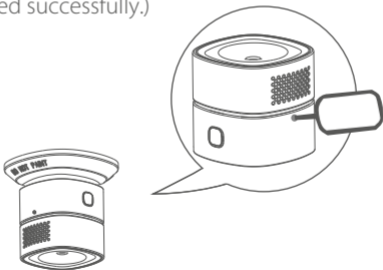
Rotate the bracket counter-clockwise from the installation base, then remove the battery insulating film to turn on power.



Step 4:

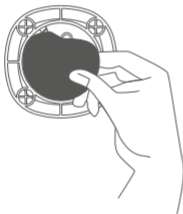
Follow the App prompt and press the networking hole for 2 seconds until a green LED flashes quickly. App will be prompted once successfully connected.

(Press the networking hole for 5 seconds to disconnect from the network. Wait until the green LED flashes slowly for 3 seconds which indicates that the device has disconnected successfully.)



Step 5:

Remove the double-sided adhesive membrane on the mounting bracket, and rotate the smoke alarm into the bracket.

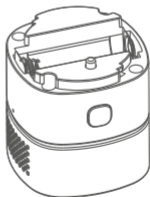


Status and Troubleshooting

Status	Light	Alarm Sound
Normal	Red LED flashes every 53 seconds	No
Testing	Red LED flashes 4 times in 10 seconds	Rapid Beeps
Warm Up	LED flashes alternately in 3 colors then go out	Beeps Once
Mute Mode	Red LED flashes every 10 seconds	No
Low Power	Red LED flashes every 40 seconds	Beeps every 40 seconds
Fault	Red LED flashes every 40 seconds	Beeps every 40 seconds

Please refer to the following if the sensor doesn't work normally:

1. Fault is caused by dirt with dust or oil, etc.,. Please clean the alarm properly.
2. Check whether the alarm is properly rotated into the mounting bracket.
3. Replace the battery and follow the battery positive and negative electrode.



Notes

1. This product can not be used for detecting natural gas (methane), propane, butane, and other combustible gas.
2. Clean once a month. Users may use household vacuum cleaner and soft brush when cleaning.
3. Do not use cleanser or solvent wipes on sensor. Avoid spraying air freshener, hair spray, oil paint or other aerosol near sensor.
4. Effective working life span is 5 years. Replacing the sensor every 5 years whether faulty or not is highly suggested. (Battery lifespan is up to 3 years.)
5. Please be attentive when alarm happens. Shut off valves immediately and open the windows for ventilation. Besides using sensors correctly, users should practice safety fire precautions.

Technical Specifications

Product Dimensions:	60 x 60 x 49.2mm
Alarm Volume:	85 dB/3m
Alarm Current:	≤ 60mA
Networking:	Zigbee ZHA / Z-WAVE
Operating Temperature:	-10~50°C
Working Humidity:	Max 95% RH
Wireless Networking Distance	≤ 100m (Open Area)

Aztech

©2018 Aztech Technologies Pte Ltd. All rights reserved.